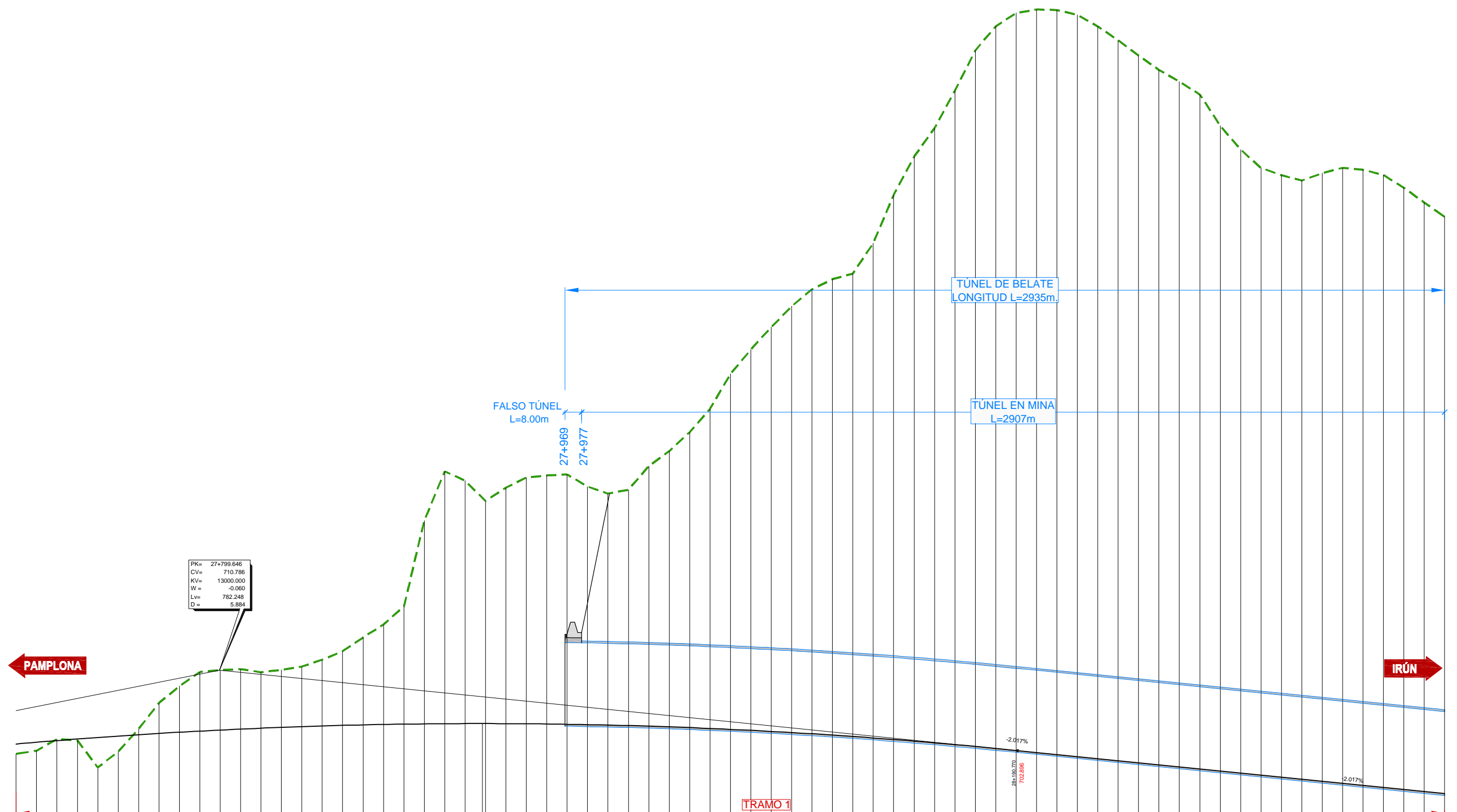
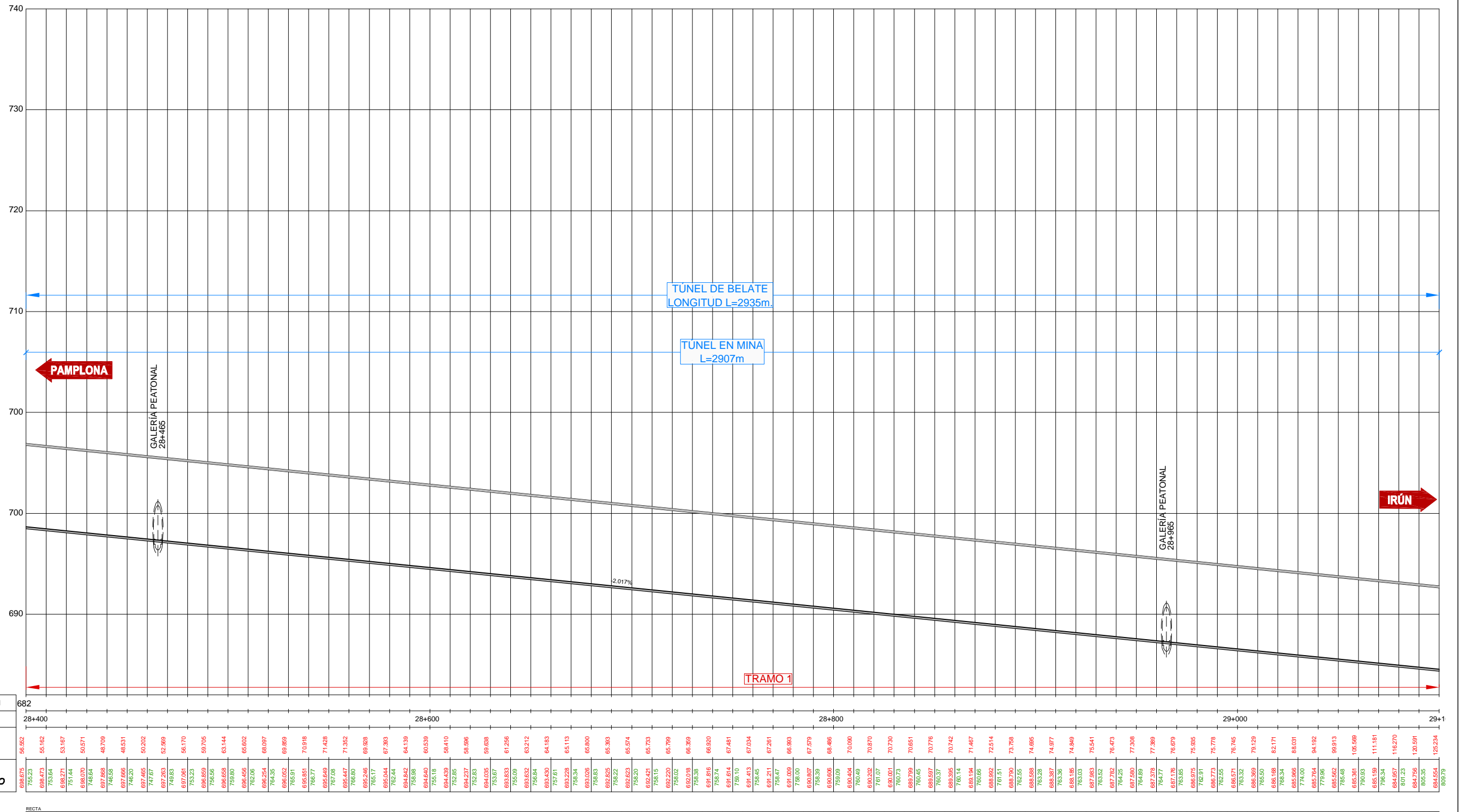


PLANO DE COMPARACION		676
P.K.		27+000
COTAS ROJAS		
COTA RASANTE	COTA TERRENO	
678.800	0.05	
678.75	0.066	
678.27	0.024	
678.60	0.001	
680.000	0.056	
680.400	0.01	
680.800	0.14	
681.200	0.007	
681.600	0.00	
682.000	0.10	
682.400	0.04	
682.800	0.04	
683.200	0.04	
683.600	0.03	
684.000	0.04	
684.400	0.004	
684.800	0.039	
685.200	0.07	
685.600	0.06	
686.000	0.02	
686.400	0.05	
686.800	0.07	
687.200	0.15	
687.600	0.23	
688.000	0.25	
688.400	0.20	
688.800	0.21	
689.200	0.18	
689.600	0.20	
690.000	0.22	
690.400	0.17	
690.800	0.11	
691.200	0.05	
691.600	0.02	
692.000	0.07	
692.400	0.204	
692.800	0.18	
693.200	0.22	
693.600	0.22	
694.000	0.19	
694.400	0.25	
694.800	0.31	
695.200	0.34	
695.600	0.14	
696.000	0.24	
696.400	0.31	
696.800	0.23	
697.200	0.23	
697.600	0.32	
698.000	0.28	
698.400	0.27	
698.800	0.23	
699.200	0.23	
699.600	0.20	
700.000	0.29	
700.400	0.19	
700.800	0.06	
701.200	0.03	
701.600	0.05	
702.000	0.08	
702.400	0.09	
702.800	0.07	
703.200	0.04	
703.600	0.02	
704.000	0.06	
704.400	0.06	
704.800	0.38	
705.200	0.94	

\\documentacion\TRABAJOS\ANAC\036_BELATE_ALMANDOZ\vigentes\02_Estudio_de_Altamativas\Planos\05_DEFINICION_ALTERNATIVAS\TBA_05_01_03_LONGITUDINAL_ALTI.dwg_10/02/2015 11:43:11, javier, 1:1

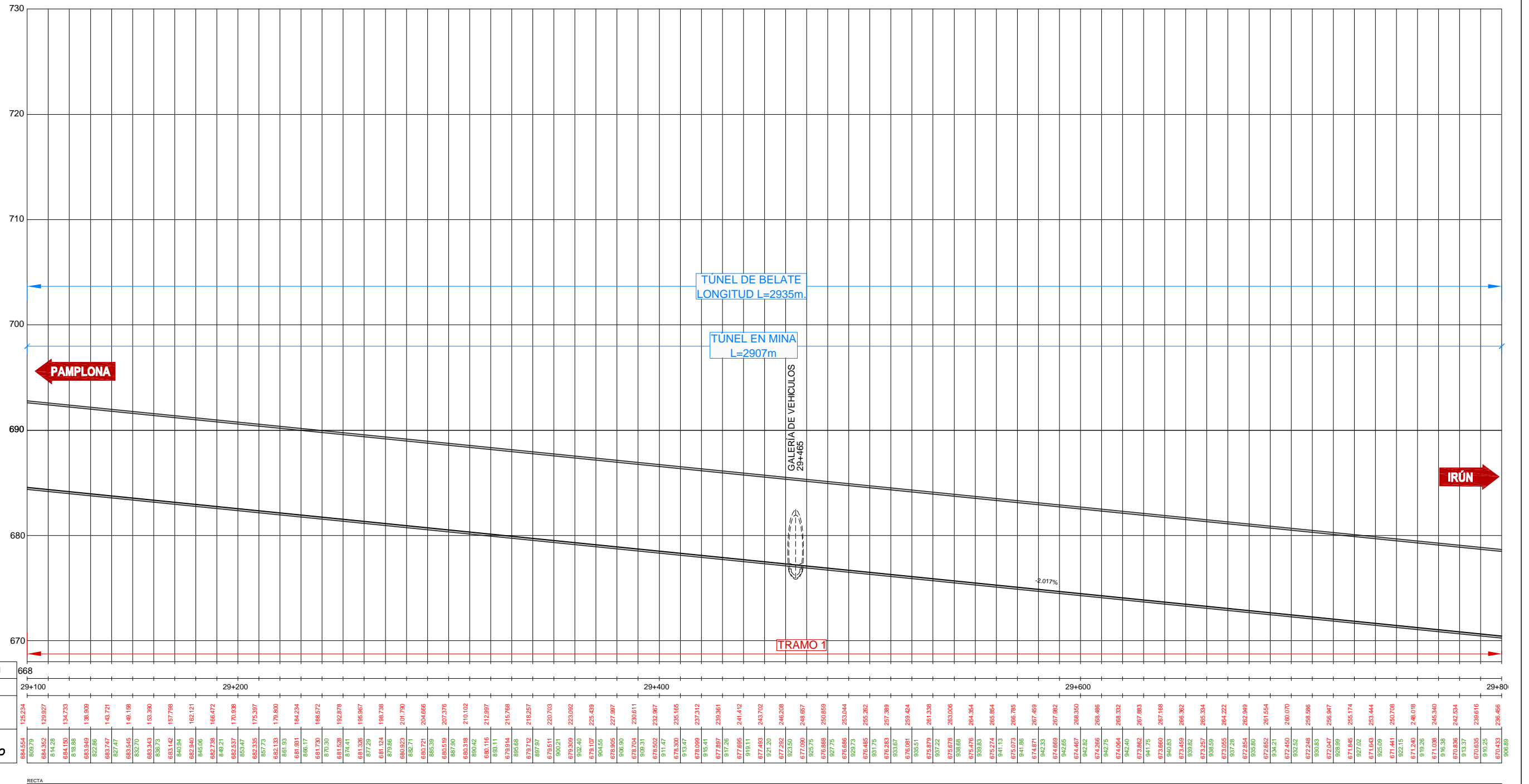


PLANO DE COMPARACION		696
P.K.		27+700
COTAS ROJAS		27+800
COTA RASANTE	COTA TERRENO	28+000
COTA RASANTE	COTA TERRENO	28+200
COTA RASANTE	COTA TERRENO	28+400
703.532	702.59	0.94
703.704	703.704	0.83
703.869	703.869	0.172
704.04	704.04	0.13
704.205	704.174	2.94
704.37	704.315	1.52
704.54	704.448	0.653
704.71	704.574	2.895
704.88	704.692	4.505
705.05	704.803	5.798
705.22	704.909	5.874
705.39	705.01	5.881
705.56	705.168	5.479
705.73	705.28	5.648
705.9	705.401	5.885
706.07	705.536	6.404
706.24	705.67	7.281
706.41	705.81	8.575
706.58	705.95	9.894
706.75	706.1	11.533
706.92	706.25	19.828
707.09	706.4	24.742
707.26	706.59	23.808
707.43	706.74	21.816
707.6	706.89	23.127
707.77	707.04	24.138
707.94	707.19	24.353
708.11	707.34	24.483
708.28	707.49	23.330
708.45	707.64	22.686
708.62	707.79	23.107
708.79	707.94	25.480
708.96	708.09	27.031
709.13	708.24	28.955
709.3	708.39	31.321
709.47	708.54	34.541
709.61	708.69	37.327
709.75	708.84	39.633
709.89	708.99	41.783
710.03	709.14	43.579
710.17	709.29	44.689
710.31	709.44	45.374
710.45	709.59	48.511
710.59	709.74	53.391
710.73	709.89	57.300
710.87	709.94	60.247
711.01	709.99	64.102
711.15	709.94	68.204
711.29	709.89	71.45
711.43	709.84	73.888
711.57	709.79	72.707
711.71	709.74	71.780
711.85	709.69	70.614
711.99	709.64	69.327
712.13	709.59	68.122
712.27	709.54	67.189
712.41	709.49	66.120
712.55	709.44	63.240
712.69	709.39	61.124
712.83	709.34	59.527
712.97	709.29	58.000
713.11	709.24	56.687
713.25	709.19	55.617
713.39	709.14	60.339
713.53	709.09	60.352
713.67	709.04	60.044
713.81	708.99	58.989
713.95	708.94	57.731
714.09	708.89	56.523



PLANO DE COMPARACION		682
P.K.		28+400
COTAS ROJAS		
COTA RASANTE	COTA TERRENO	
698.675	56.552	
752.23	55.162	
698.473	75.364	
698.371	53.167	
751.44	50.571	
698.070	74.664	
697.868	48.709	
746.58	48.531	
697.666	50.202	
697.465	52.569	
747.67	56.170	
697.263	59.705	
748.63	63.144	
697.061	65.602	
749.63	68.097	
696.859	69.859	
750.63	70.918	
696.658	71.428	
751.63	71.352	
696.456	69.928	
752.63	67.393	
696.254	64.139	
753.63	60.539	
696.052	58.410	
754.63	56.596	
695.850	59.638	
755.63	61.266	
695.648	63.212	
756.63	64.163	
695.446	65.113	
757.63	66.600	
695.244	66.393	
758.63	66.393	
695.042	66.574	
759.63	65.733	
694.840	65.799	
760.63	66.359	
694.638	66.920	
761.63	67.481	
694.436	67.034	
762.63	67.261	
694.234	66.993	
763.63	67.579	
694.032	66.486	
764.63	70.090	
693.830	70.870	
765.63	70.730	
693.628	71.467	
766.63	72.514	
693.426	73.758	
767.63	74.695	
693.224	74.869	
768.63	75.541	
693.022	75.473	
769.63	76.425	
692.820	77.398	
770.63	77.399	
692.618	76.679	
771.63	75.905	
692.416	75.778	
772.63	76.745	
692.214	79.129	
773.63	82.171	
692.012	83.051	
774.63	94.192	
691.810	99.913	
775.63	105.569	
691.608	111.181	
776.63	116.270	
691.406	120.591	
777.63	125.234	
691.204	809.79	

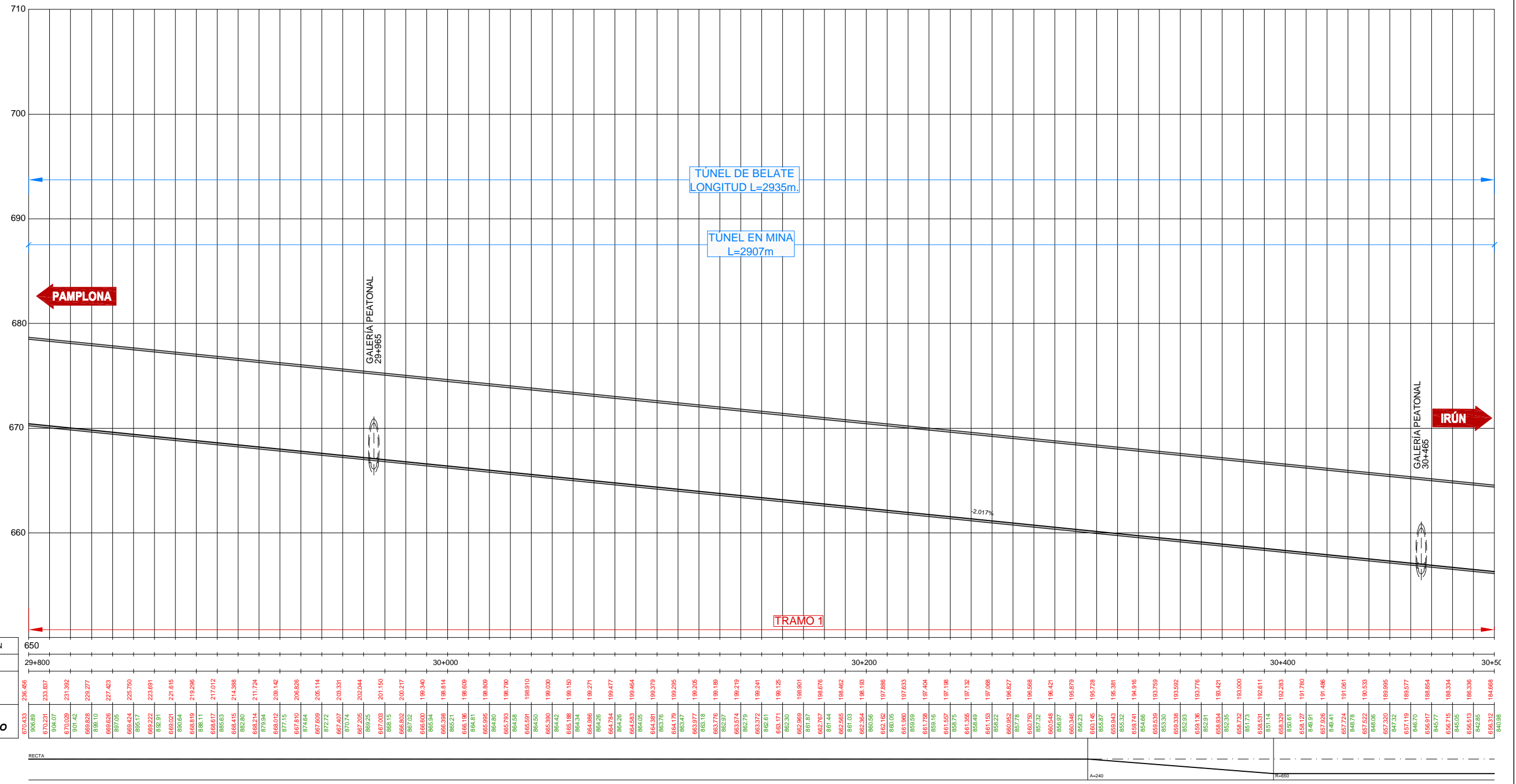
RECTA



PLANO DE COMPARACION		P.K.
COTA RASANTE	COTA TERRENO	29+100
		29+200
		29+400
		29+600
		29+800

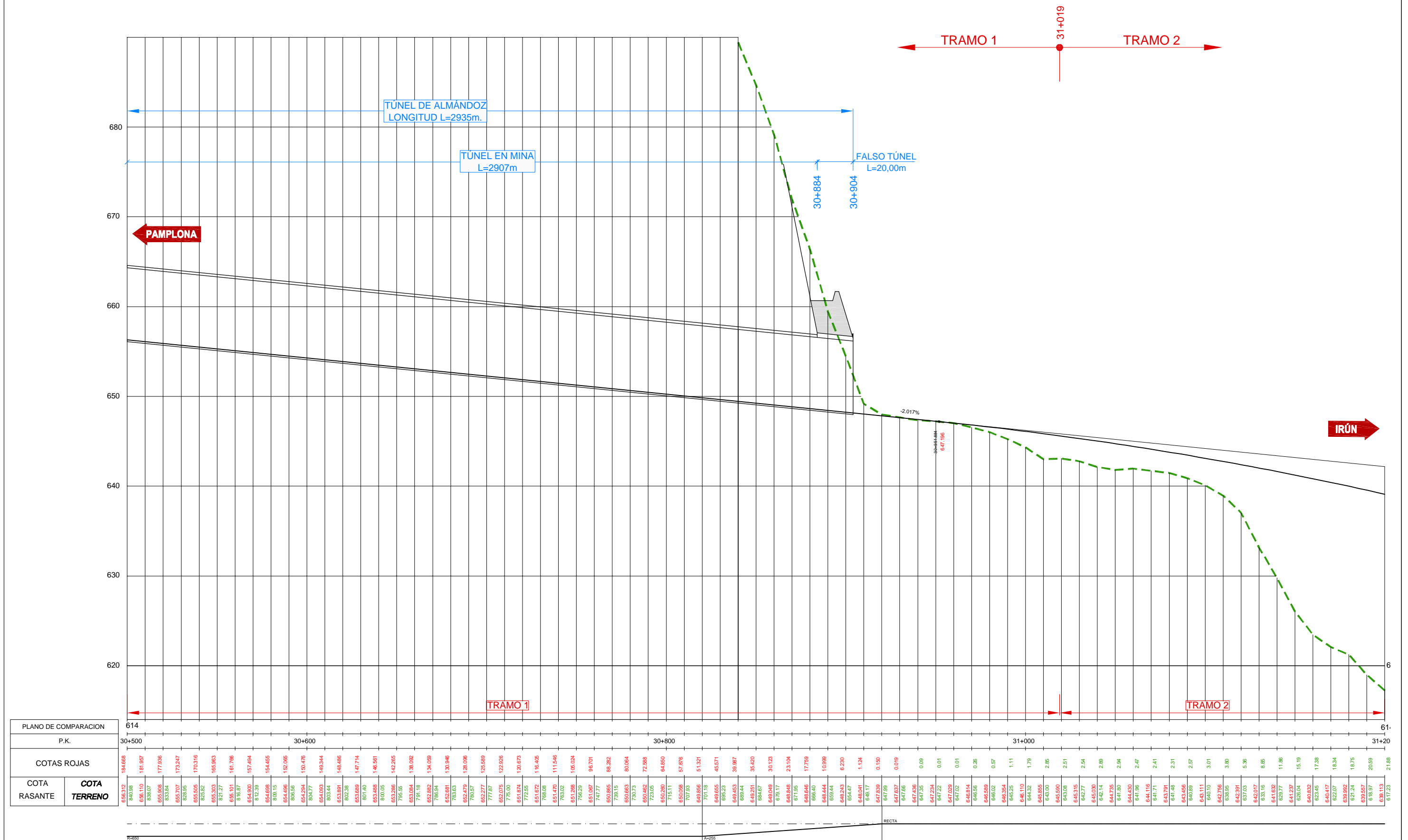
P.K.	COTA RASANTE	COTA TERRENO
29+100	684.554	126.224
29+105	680.79	129.927
29+110	684.352	124.733
29+115	684.169	138.309
29+120	683.949	143.721
29+125	683.747	149.158
29+130	683.545	153.330
29+135	683.343	157.798
29+140	683.142	162.121
29+145	682.940	166.472
29+150	682.738	170.938
29+155	682.537	175.397
29+160	682.335	178.800
29+165	682.133	184.224
29+170	681.931	188.572
29+175	681.730	192.878
29+180	681.528	195.967
29+185	681.326	198.738
29+190	681.124	201.730
29+195	680.923	204.666
29+200	680.721	207.376
29+205	680.519	210.102
29+210	680.318	212.997
29+215	680.116	215.768
29+220	679.914	218.257
29+225	679.712	220.703
29+230	679.511	223.092
29+235	679.309	225.439
29+240	679.107	227.897
29+245	678.905	230.261
29+250	678.704	232.867
29+255	678.503	235.165
29+260	678.302	237.312
29+265	678.101	239.361
29+270	677.900	241.412
29+275	677.699	243.702
29+280	677.498	246.208
29+285	677.297	248.867
29+290	677.096	250.859
29+295	676.895	253.044
29+300	676.694	255.262
29+305	676.493	257.389
29+310	676.292	259.424
29+315	676.091	261.338
29+320	675.890	263.006
29+325	675.689	264.354
29+330	675.488	265.654
29+335	675.287	266.785
29+340	675.086	267.659
29+345	674.885	268.466
29+350	674.684	269.332
29+355	674.483	269.883
29+360	674.282	270.168
29+365	674.081	270.362
29+370	673.880	270.534
29+375	673.679	270.681
29+380	673.478	270.708
29+385	673.277	270.708
29+390	673.076	270.681
29+395	672.875	270.626
29+400	672.674	270.544
29+405	672.473	270.444
29+410	672.272	270.326
29+415	672.071	270.191
29+420	671.870	270.038
29+425	671.669	269.868
29+430	671.468	269.681
29+435	671.267	269.477
29+440	671.066	269.257
29+445	670.865	269.021
29+450	670.664	268.769
29+455	670.463	268.501
29+460	670.262	268.217
29+465	670.061	267.918
29+470	669.860	267.604
29+475	669.659	267.275
29+480	669.458	266.931
29+485	669.257	266.572
29+490	669.056	266.198
29+495	668.855	265.809
29+500	668.654	265.405
29+505	668.453	264.986
29+510	668.252	264.552
29+515	668.051	264.103
29+520	667.850	263.639
29+525	667.649	263.161
29+530	667.448	262.668
29+535	667.247	262.160
29+540	667.046	261.637
29+545	666.845	261.100
29+550	666.644	260.548
29+555	666.443	260.000
29+560	666.242	259.435
29+565	666.041	258.854
29+570	665.840	258.257
29+575	665.639	257.644
29+580	665.438	257.015
29+585	665.237	256.370
29+590	665.036	255.709
29+595	664.835	255.032
29+600	664.634	254.340
29+605	664.433	253.632
29+610	664.232	252.908
29+615	664.031	252.168
29+620	663.830	251.412
29+625	663.629	250.640
29+630	663.428	249.852
29+635	663.227	249.048
29+640	663.026	248.228
29+645	662.825	247.391
29+650	662.624	246.537
29+655	662.423	245.666
29+660	662.222	244.778
29+665	662.021	243.873
29+670	661.820	242.951
29+675	661.619	242.012
29+680	661.418	241.056
29+685	661.217	240.083
29+690	661.016	239.093
29+695	660.815	238.086
29+700	660.614	237.061
29+705	660.413	236.018
29+710	660.212	234.957
29+715	660.011	233.878
29+720	659.810	232.781
29+725	659.609	231.666
29+730	659.408	230.532
29+735	659.207	229.379
29+740	659.006	228.207
29+745	658.805	227.016
29+750	658.604	225.806
29+755	658.403	224.577
29+760	658.202	223.329
29+765	658.001	222.062
29+770	657.800	220.776
29+775	657.600	219.471
29+780	657.400	218.147
29+785	657.200	216.804
29+790	657.000	215.442
29+795	656.800	214.061
29+800	656.600	212.661

RECTA



PLANO DE COMPARACION		P.K.
COTAS ROJAS		29+800 236.466 906.89 670.231 233.837 904.07 670.029 231.392 907.42 669.628 229.277 908.10 669.628 227.423 897.05 669.424 225.750 895.17 669.222 223.691 902.91 669.021 221.615 903.64 668.819 219.296 908.11 668.617 217.012 885.63 668.415 214.388 882.80 668.214 211.724 879.64 668.012 208.142 877.15 667.810 206.826 874.64 667.608 205.114 872.72 667.407 203.331 870.74 667.205 202.044 869.25 667.003 201.150 866.15 666.802 200.217 867.02 666.600 199.340 865.95 666.398 198.814 862.21 666.188 198.609 864.61 665.995 198.809 864.80 665.793 198.730 864.58 665.591 198.910 864.50 665.390 199.030 864.42 665.188 198.150 864.54 664.986 199.271 864.26 664.784 199.477 864.26 664.583 199.464 864.05 664.398 199.379 863.76 664.179 199.295 863.47 663.977 199.205 863.18 663.776 199.189 862.97 663.574 199.219 862.79 663.372 199.241 862.61 663.171 199.125 862.30 662.969 199.301 861.87 662.767 199.676 861.44 662.565 199.462 861.03 662.364 198.118 860.56 662.162 197.996 860.05 661.960 197.633 859.59 661.758 197.404 859.16 661.557 197.198 858.76 661.355 197.132 858.49 661.153 197.068 858.22 660.952 196.827 857.78 660.750 196.588 857.32 660.548 196.421 856.97 660.346 195.979 856.23 660.145 195.728 855.87 659.943 195.381 855.32 659.741 194.916 854.66 659.539 193.759 853.90 659.338 193.592 852.93 659.136 193.776 852.91 658.934 193.421 852.35 658.732 193.000 851.72 658.531 192.811 851.14 658.329 192.283 850.61 658.127 191.780 849.91 657.926 191.488 849.41 657.724 191.061 848.78 657.522 190.533 848.06 657.320 189.995 847.32 657.119 189.577 846.70 656.917 189.854 846.77 656.715 189.334 846.05 656.513 188.336 844.85 656.312 184.668 840.98
COTA RASANTE	COTA TERRENO	

\\documentacion\TRABAJOS\ANAC\036_BELATE_ALMANDOZ\vigentes\02_Estudio_de_Alternativas\Planos\05_DFINICION_ALTERNATIVAS\BTA_05_01_03_LONGITUDINAL_ALTI.dwg_10/02/2015 11:43:31, javier, 1:1



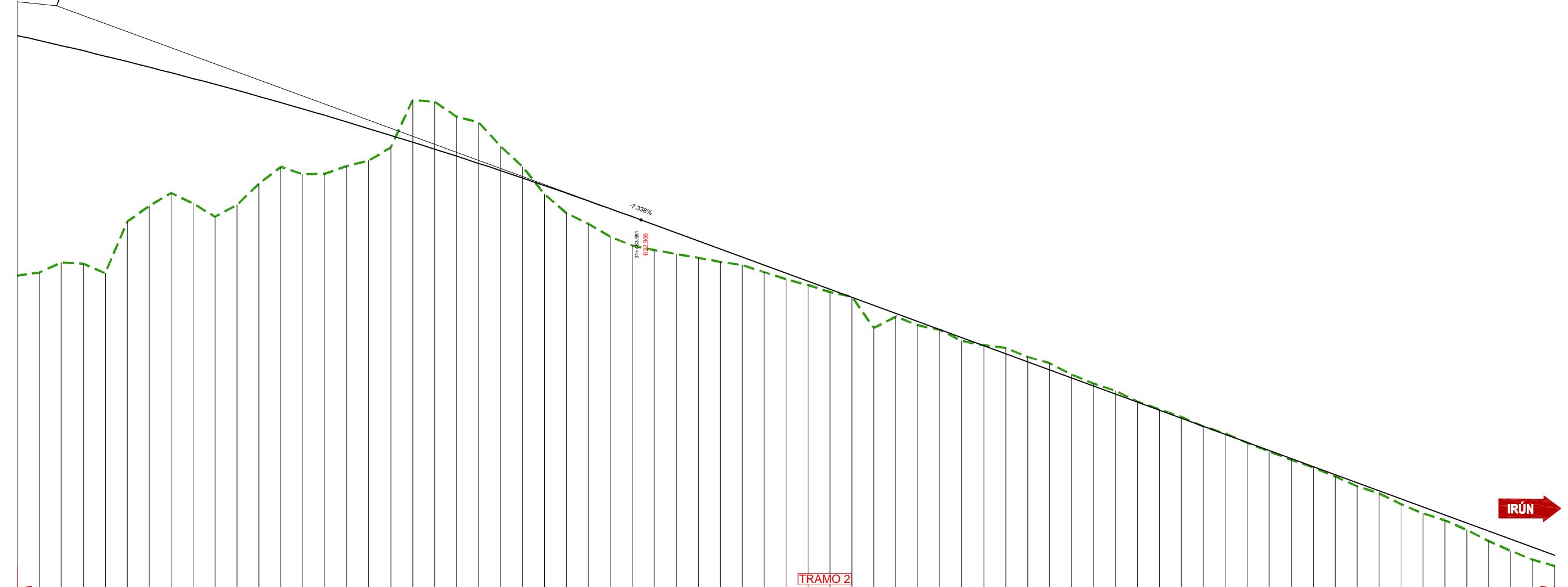
PLANO DE COMPARACION		P.K.
COTAS ROJAS		30+500 30+600 30+800 31+000 31+200
COTA RASANTE	COTA TERRENO	656.312 184.668 656.110 181.957 655.908 177.936 655.707 173.247 655.505 170.316 655.303 165.963 655.101 161.788 654.900 157.494 654.698 154.455 654.496 152.065 654.294 150.476 654.093 148.344 653.891 146.486 653.689 147.714 653.488 146.261 653.286 142.265 653.084 138.082 652.882 134.059 652.681 130.346 652.479 128.056 652.277 125.589 652.075 122.826 651.874 120.673 651.672 118.405 651.470 111.546 651.268 108.024 651.067 96.701 650.865 88.262 650.663 80.064 650.462 72.588 650.260 64.850 650.058 57.876 649.856 51.321 649.655 45.571 649.453 39.987 649.251 35.420 649.049 30.123 648.848 23.104 648.646 17.759 648.444 10.959 648.243 6.230 648.041 1.124 647.839 0.150 647.637 0.019 647.436 0.09 647.234 0.01 647.032 0.01 646.831 0.26 646.630 0.57 646.428 1.11 646.227 1.79 646.025 2.85 645.824 2.51 645.623 2.54 645.422 2.89 645.221 2.94 645.020 2.47 644.819 2.41 644.618 2.31 644.417 2.57 644.216 3.01 644.015 3.80 643.814 5.36 643.613 8.85 643.412 11.86 643.211 15.19 643.010 17.38 642.809 3.80 642.608 5.36 642.407 8.85 642.206 11.86 642.005 15.19 641.804 17.38 641.603 18.34 641.402 20.59 641.201 21.88

\\documentacion\TRABAJOS\ANAC\036_BELATE_ALMANDOZ\vigentes\02_Estudio_de_Alternativas\Planos\05_DEFINICION_ALTERNATIVAS\05_01_03_LONGITUDINAL_ALTI.dwg_10/02/2015 11:43:36_javier_1:1

PK= 31+217.933
 CV= 641.829
 KV= 10000.000
 W= -0.053
 Lv= 532.097
 D= 3.539

PAMPLONA ←

IRÚN →



PLANO DE COMPARACION		588
P.K.		31+200
COTAS ROJAS		
COTA RASANTE	COTA TERRENO	
639.113	617.23	21.88
	638.658	21.14
	617.52	19.76
	638.109	19.39
	618.43	19.78
	637.708	14.59
	616.33	12.67
	637.233	10.95
	617.45	11.39
	636.738	12.06
	636.234	10.43
	635.719	7.94
	634.77	5.85
	634.659	5.96
	634.114	5.32
	633.659	4.01
	633.159	2.91
	632.994	1.11
	632.420	3.83
	631.835	4.325
	631.249	3.699
	630.658	3.731
	629.995	2.232
	629.395	1.038
	628.761	0.78
	628.116	1.80
	627.461	2.09
	626.796	2.65
	626.121	2.61
	625.436	2.30
	624.741	1.93
	624.037	1.53
	623.322	1.17
	622.597	0.72
	621.864	0.64
	621.120	0.95
	620.366	0.35
	619.602	0.26
	618.829	0.42
	618.046	2.95
	617.255	0.29
	616.451	0.34
	615.637	0.02
	614.813	0.30
	613.982	0.029
	613.146	0.825
	612.304	0.443
	611.456	0.609
	610.605	0.301
	609.746	0.216
	608.882	0.292
	608.015	0.042
	607.147	0.076
	606.274	0.109
	605.400	0.02
	604.523	0.064
	603.643	0.05
	602.761	0.09
	601.877	0.13
	600.991	0.09
	600.103	0.17
	599.214	0.33
	598.323	0.26
	597.430	0.49
	596.535	0.60
	595.639	0.51
	594.742	0.64
	593.845	0.93
	592.946	1.09
	592.044	1.16
	591.139	1.00
	590.233	

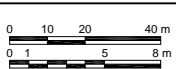


DEPARTAMENTO DE FOMENTO
 DIRECCIÓN GENERAL DE OBRAS PÚBLICAS
 SERVICIO DE ESTUDIOS Y PROYECTOS
 SECCIÓN DE PROYECTOS

Vº Bº LA ICCP DIRECTORA DEL ESTUDIO
 Mª CARMEN GONZÁLEZ MARTÍNEZ

EL INGENIERO DE CAMINOS, C. y P.
 AUTOR DEL ESTUDIO
 JOAQUÍN BERNAD BERNAD

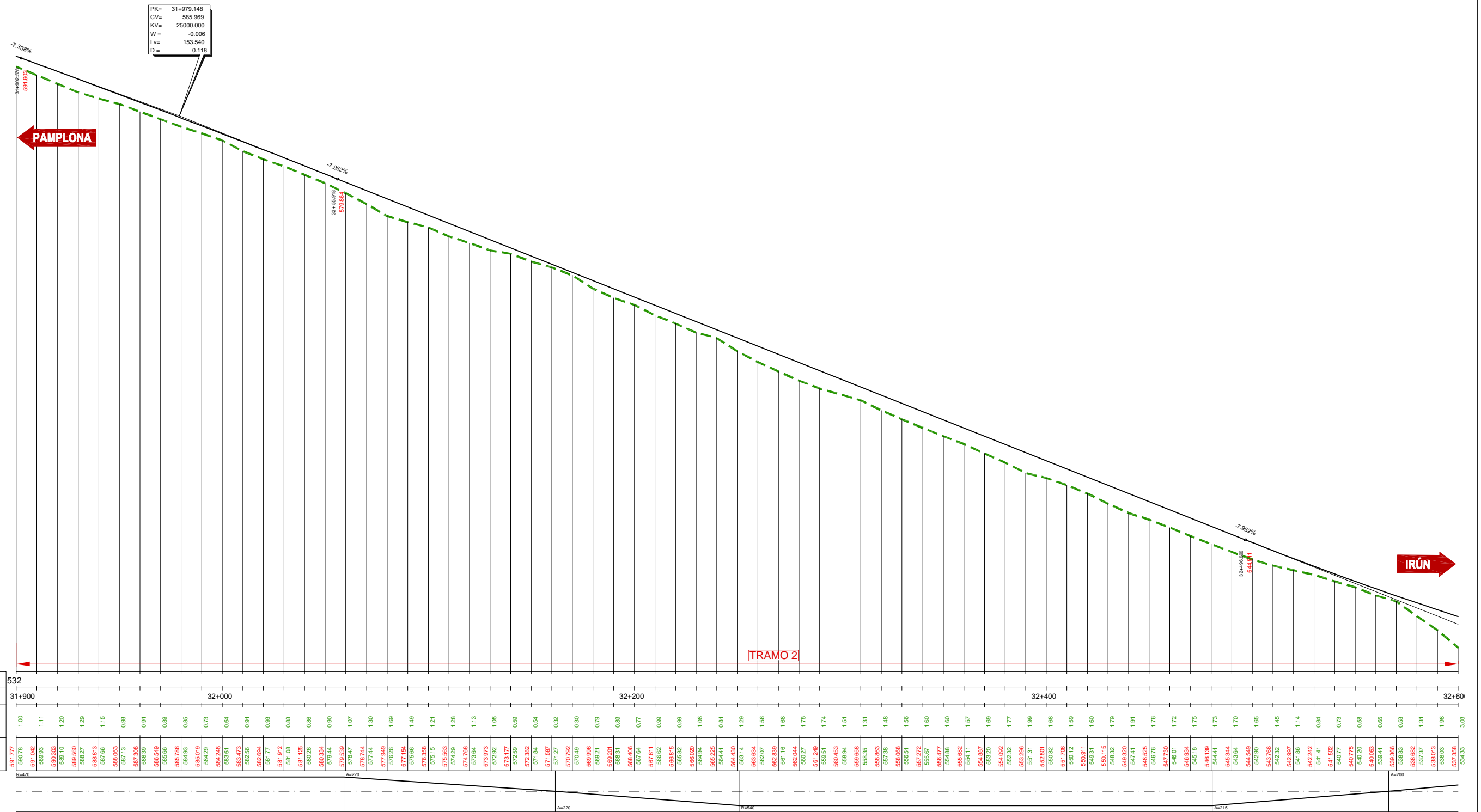
ESCALA:
 1 / 2000
 1 / 400



TÍTULO
 ESTUDIO DE ALTERNATIVAS PARA LA DUPLICACIÓN
 DE LOS TÚNELES DE BELATE Y ALMANDOZ EN LA CARRETERA
 N-121-A (PAMPLONA-BEHOBIA)

DESIGNACIÓN DEL PLANO
 DEFINICIÓN DE ALTERNATIVAS
 ALTERNATIVA - 1
 PERFIL LONGITUDINAL

DOCUMENTO PLANOS 5.1.3
 FECHA DICIEMBRE 2014
 HOJA 7 DE 14

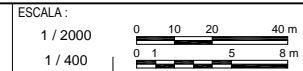


DEPARTAMENTO DE FOMENTO
 DIRECCIÓN GENERAL DE OBRAS PÚBLICAS
 SERVICIO DE ESTUDIOS Y PROYECTOS
 SECCIÓN DE PROYECTOS

Vº Bº LA ICCP DIRECTORA DEL ESTUDIO
 Mª CARMEN GONZÁLEZ MARTÍNEZ



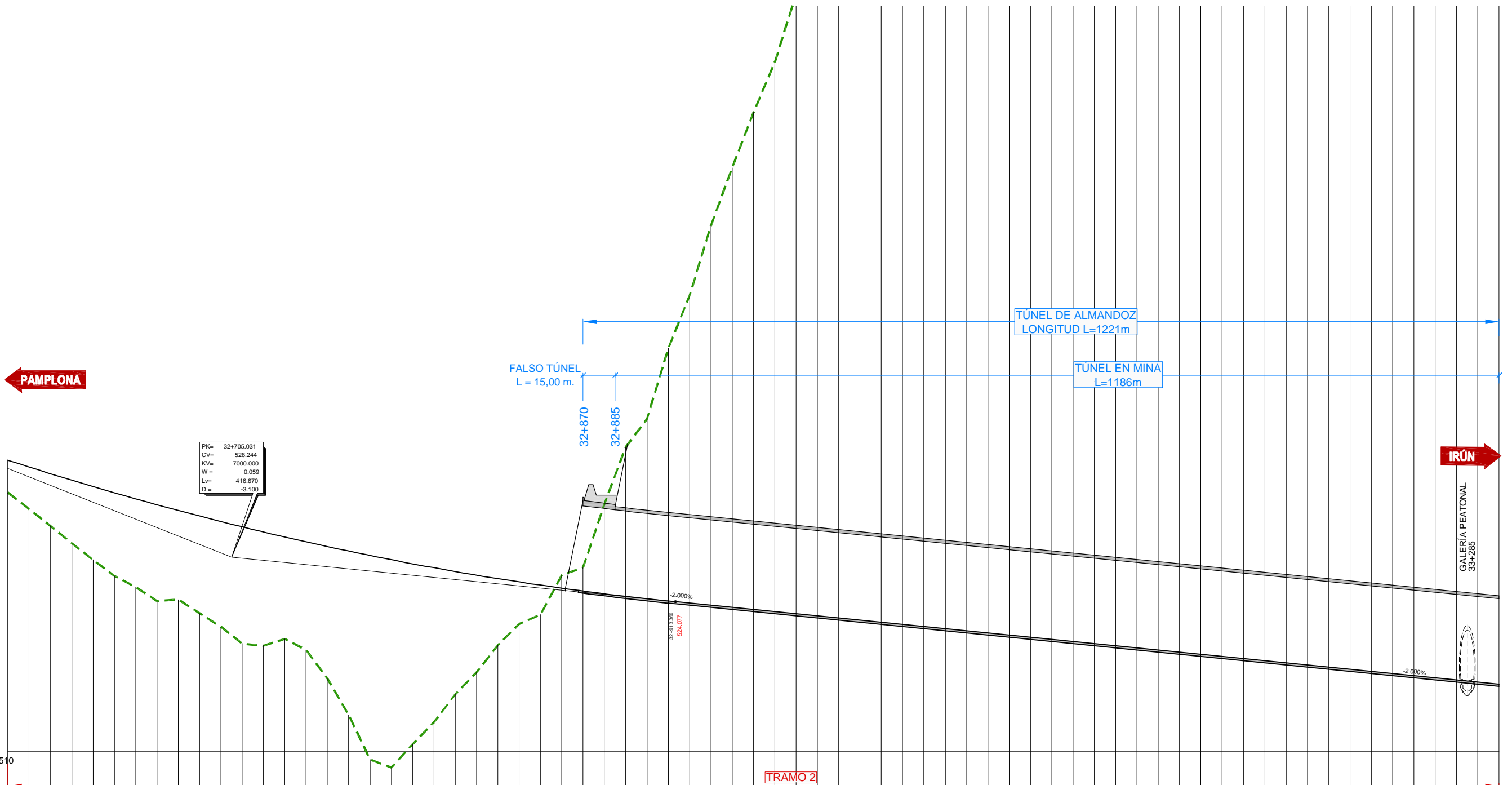
EL INGENIERO DE CAMINOS, C. y P.
 AUTOR DEL ESTUDIO
 JOAQUÍN BERNAD BERNAD



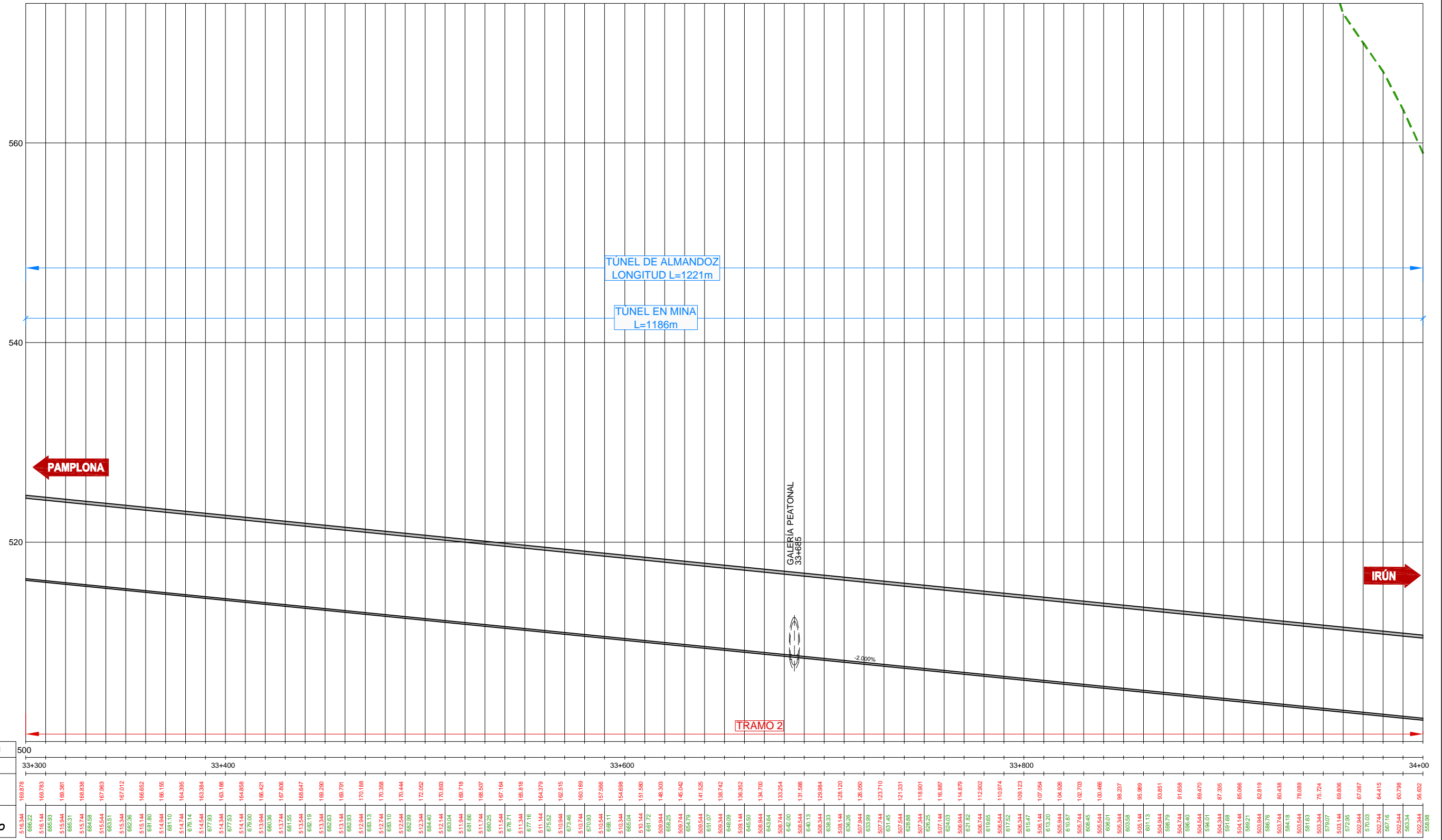
TÍTULO
 ESTUDIO DE ALTERNATIVAS PARA LA DUPLICACIÓN DE LOS TÚNELES DE BELATE Y ALMANDOZ EN LA CARRETERA N-121-A (PAMPLONA-BEHOBA)

DESIGNACIÓN DEL PLANO
 DEFINICIÓN DE ALTERNATIVAS ALTERNATIVA - 1 PERFIL LONGITUDINAL

DOCUMENTO PLANOS 5.1.3
 FECHA DICIEMBRE 2014
 HOJA 8 DE 14



PLANO DE COMPARACION		P.K.	
COTAS ROJAS		32+600	33+300
COTA RASANTE	COTA TERRENO	3.03	169.878
		3.95	169.878
		4.91	169.878
		5.80	169.878
		6.88	169.878
		7.80	169.878
		8.28	169.878
		9.03	169.878
		9.36	169.878
		9.12	169.878
		8.97	169.878
		10.95	169.878
		10.87	169.878
		9.56	169.878
		10.14	169.878
		12.38	169.878
		15.36	169.878
		19.16	169.878
		19.50	169.878
		16.93	169.878
		14.50	169.878
		11.52	169.878
		9.12	169.878
		6.26	169.878
		3.94	169.878
		2.76	169.878
		1.222	169.878
		2.199	169.878
		8.415	169.878
		13.998	169.878
		16.868	169.878
		23.703	169.878
		28.851	169.878
		35.633	169.878
		41.246	169.878
		46.651	169.878
		51.552	169.878
		58.162	169.878
		60.865	169.878
		68.645	169.878
		74.714	169.878
		79.905	169.878
		84.872	169.878
		89.468	169.878
		94.304	169.878
		98.857	169.878
		103.410	169.878
		107.353	169.878
		111.220	169.878
		114.666	169.878
		119.033	169.878
		123.403	169.878
		127.739	169.878
		131.845	169.878
		134.700	169.878
		138.226	169.878
		141.777	169.878
		146.704	169.878
		148.679	169.878
		151.480	169.878
		154.980	169.878
		157.763	169.878
		160.072	169.878
		162.355	169.878
		164.293	169.878
		166.325	169.878
		168.093	169.878
		169.086	169.878
		169.640	169.878
		170.980	169.878
		169.878	169.878



PLANO DE COMPARACION		P.K.
COTAS ROJAS		
COTA RASANTE	COTA TERRENO	
51.6344	169.878	33+300
51.6144	169.793	
51.5944	169.708	
51.5744	169.623	
51.5544	169.538	
51.5344	169.453	
51.5144	169.368	
51.4944	169.283	
51.4744	169.198	
51.4544	169.113	
51.4344	169.028	
51.4144	168.943	
51.3944	168.858	
51.3744	168.773	
51.3544	168.688	
51.3344	168.603	
51.3144	168.518	
51.2944	168.433	
51.2744	168.348	
51.2544	168.263	
51.2344	168.178	
51.2144	168.093	
51.1944	168.008	
51.1744	167.923	
51.1544	167.838	
51.1344	167.753	
51.1144	167.668	
51.0944	167.583	
51.0744	167.498	
51.0544	167.413	
51.0344	167.328	
51.0144	167.243	
50.9944	167.158	
50.9744	167.073	
50.9544	166.988	
50.9344	166.903	
50.9144	166.818	
50.8944	166.733	
50.8744	166.648	
50.8544	166.563	
50.8344	166.478	
50.8144	166.393	
50.7944	166.308	
50.7744	166.223	
50.7544	166.138	
50.7344	166.053	
50.7144	165.968	
50.6944	165.883	
50.6744	165.798	
50.6544	165.713	
50.6344	165.628	
50.6144	165.543	
50.5944	165.458	
50.5744	165.373	
50.5544	165.288	
50.5344	165.203	
50.5144	165.118	
50.4944	165.033	
50.4744	164.948	
50.4544	164.863	
50.4344	164.778	
50.4144	164.693	
50.3944	164.608	
50.3744	164.523	
50.3544	164.438	
50.3344	164.353	
50.3144	164.268	
50.2944	164.183	
50.2744	164.098	
50.2544	164.013	
50.2344	163.928	
50.2144	163.843	
50.1944	163.758	
50.1744	163.673	
50.1544	163.588	
50.1344	163.503	
50.1144	163.418	
50.0944	163.333	
50.0744	163.248	
50.0544	163.163	
50.0344	163.078	
50.0144	162.993	
50.0000	162.908	

RECTA

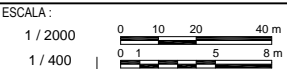


DEPARTAMENTO DE FOMENTO
DIRECCIÓN GENERAL DE OBRAS PÚBLICAS
SERVICIO DE ESTUDIOS Y PROYECTOS
SECCIÓN DE PROYECTOS

Vº Bº LA ICCP DIRECTORA DEL ESTUDIO
Mª CARMEN GONZÁLEZ MARTÍNEZ



EL INGENIERO DE CAMINOS, C. y P.
AUTOR DEL ESTUDIO
JOAQUÍN BERNAD BERNAD



TÍTULO
ESTUDIO DE ALTERNATIVAS PARA LA DUPLICACIÓN DE LOS TÚNELES DE BELATE Y ALMANDOZ EN LA CARRETERA N-121-A (PAMPLONA-BEHOBIA)

DESIGNACIÓN DEL PLANO
DEFINICIÓN DE ALTERNATIVAS ALTERNATIVA - 1 PERFIL LONGITUDINAL

DOCUMENTO PLANOS 5.1.3
FECHA DICIEMBRE 2014
HOJA 10 DE 14

\\documentacion\TRABAJOS\ANAC\036_BELATE_ALMANDOZ\vigentes\02_Estudio_de_Alternativas\Planos\05_DEFINICION_ALTERNATIVAS\Planos\05_01_03_LONGITUDINAL_ALT1.dwg_10/02/2015 11:43:56_javier_1:1



PLANO DE COMPARACION		472
P.K.		34+000
COTAS ROJAS		
COTA RASANTE	COTA TERRENO	
502.344	56.632	
558.98	51.968	
502.148	55.111	
501.644	46.566	
548.651	41.362	
501.744	36.925	
501.544	29.465	
501.344	22.882	
501.144	19.754	
500.944	19.852	
500.744	20.000	
500.544	20.161	
500.344	20.328	
500.144	18.103	
499.944	19.478	
499.744	18.712	
499.544	15.667	
499.344	14.518	
499.144	12.562	
498.944	11.156	
498.744	10.116	
498.544	8.841	
498.344	8.704	
498.144	8.902	
497.944	9.098	
497.744	7.133	
497.544	5.888	
497.344	5.046	
497.144	3.327	
496.944	2.397	
496.744	0.63	
496.544	3.49	
496.344	7.09	
496.144	5.20	
495.944	3.25	
495.744	1.42	
495.544	0.77	
495.344	0.80	
495.144	0.85	
494.944	1.90	
494.744	1.88	
494.544	1.63	
494.344	1.49	
494.144	1.22	
493.944	1.08	
493.744	0.81	
493.544	0.76	
493.344	0.60	
493.144	0.51	
492.944	0.49	
492.744	0.42	
492.544	0.39	
492.344	0.34	
492.144	0.35	
491.944	0.32	
491.744	0.25	
491.544	0.11	
491.344	0.04	
491.144	0.056	
490.944	0.038	
490.744	0.010	
490.544	0.057	
490.344	0.050	
490.144	0.063	
489.944	0.070	
489.744	0.068	
489.544	0.060	



DEPARTAMENTO DE FOMENTO
 DIRECCIÓN GENERAL DE OBRAS PÚBLICAS
 SERVICIO DE ESTUDIOS Y PROYECTOS
 SECCIÓN DE PROYECTOS

Vº Bº LA ICCP DIRECTORA DEL ESTUDIO
 Mª CARMEN GONZÁLEZ MARTÍNEZ



EL INGENIERO DE CAMINOS, C. y P.
 AUTOR DEL ESTUDIO
 JOAQUÍN BERNAD BERNAD

ESCALA:
 1 / 2000
 1 / 400

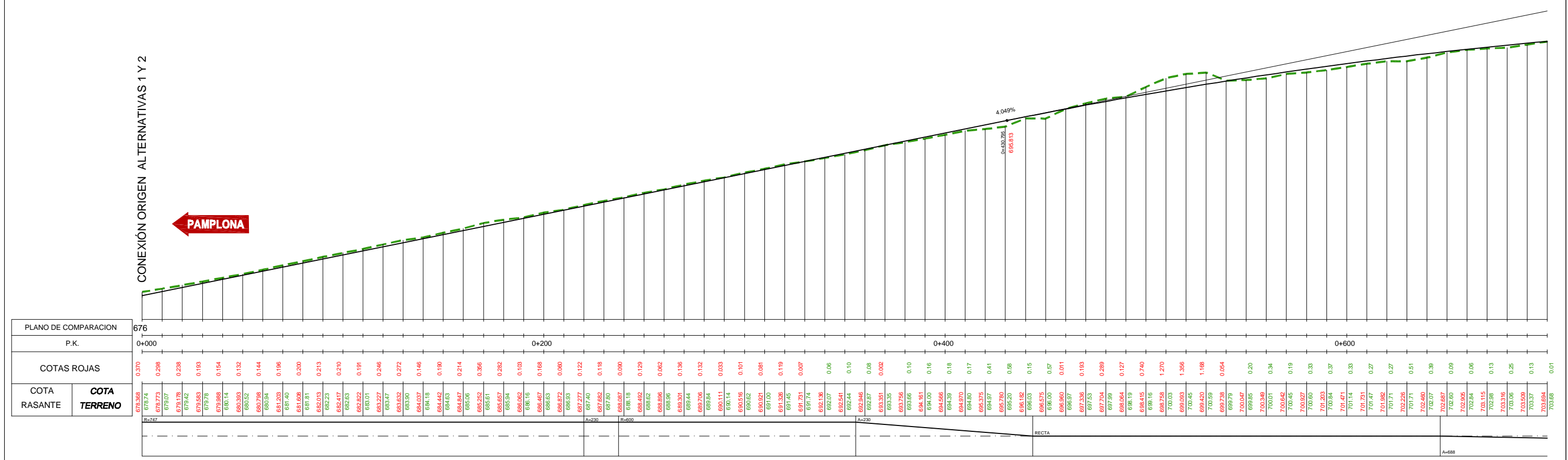
TÍTULO
 ESTUDIO DE ALTERNATIVAS PARA LA DUPLICACIÓN DE LOS TÚNELES DE BELATE Y ALMANDOZ EN LA CARRETERA N-121-A (PAMPLONA-BEHOBIA)

DESIGNACIÓN DEL PLANO
 DEFINICIÓN DE ALTERNATIVAS ALTERNATIVA - 1 PERFIL LONGITUDINAL

DOCUMENTO PLANOS 5.1.3
 FECHA DICIEMBRE 2014
 HOJA 11 DE 14

EJE 3 CALZADA DERECHA EN ALTERNATIVAS 1 Y 2. TRAMO INICIAL

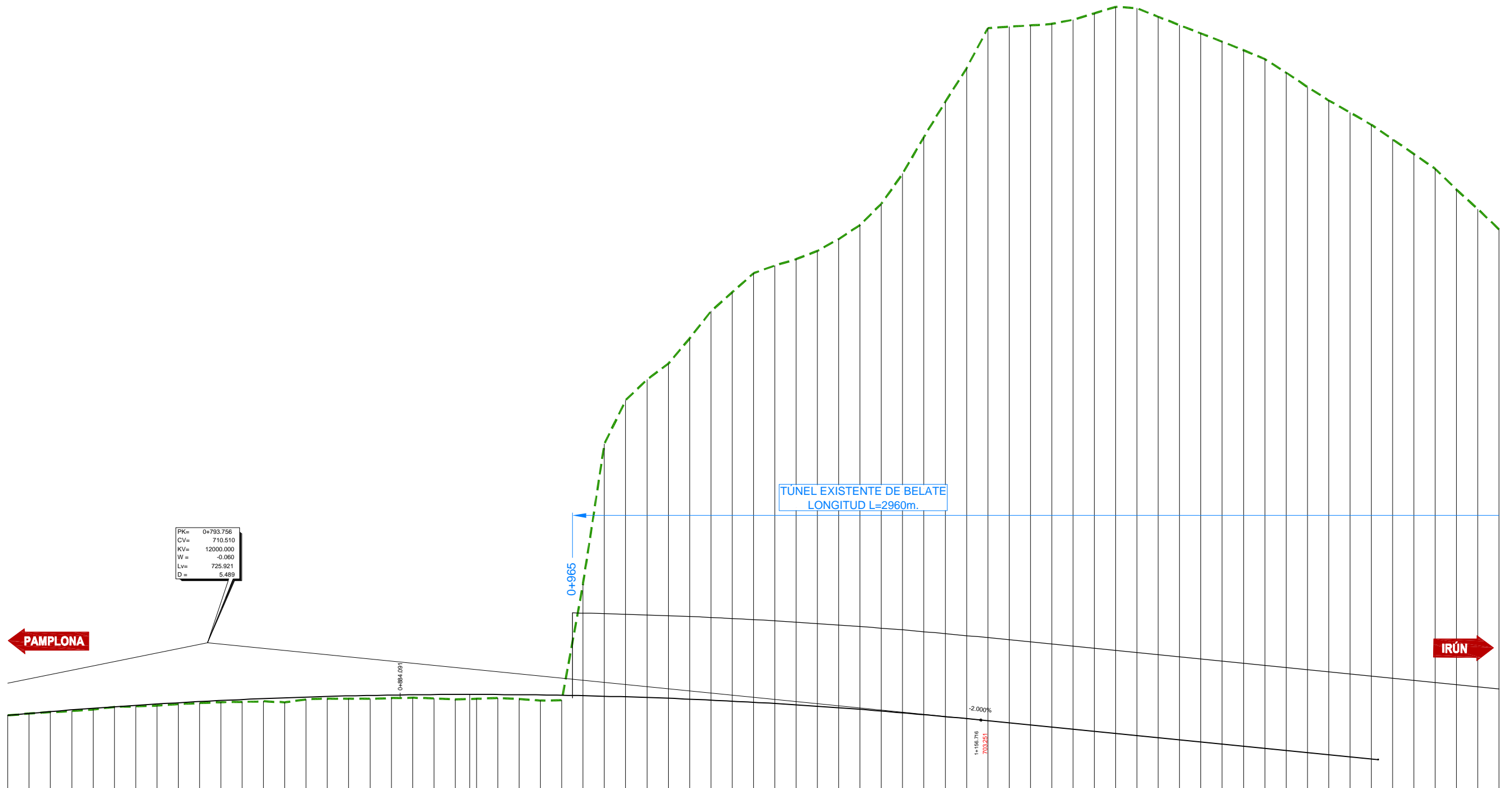
CONEXIÓN ORIGEN ALTERNATIVAS 1 Y 2



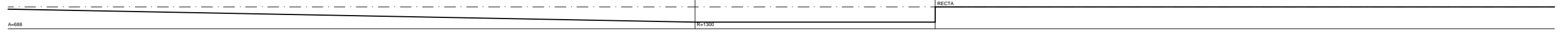
PLANO DE COMPARACION		676
P.K.		0+000
COTAS ROJAS		
COTA RASANTE	COTA TERRENO	
679.366	0.370	
676.74		
679.07	0.298	
679.178	0.238	
679.442	0.193	
679.593	0.154	
679.698	0.132	
680.393	0.144	
680.798	0.196	
681.203	0.200	
681.608	0.213	
682.013	0.210	
682.417	0.191	
682.822	0.246	
683.227	0.272	
683.632	0.146	
684.037	0.190	
684.442	0.214	
684.847	0.356	
685.252	0.282	
685.657	0.282	
686.062	0.103	
686.467	0.168	
686.872	0.000	
687.277	0.122	
687.682	0.118	
688.087	0.090	
688.492	0.129	
688.896	0.062	
689.301	0.136	
689.706	0.132	
690.111	0.033	
690.516	0.101	
690.921	0.081	
691.326	0.119	
691.731	0.007	
692.136	0.06	
692.541	0.10	
692.946	0.08	
693.351	0.002	
693.756	0.10	
694.161	0.16	
694.566	0.16	
694.971	0.17	
695.376	0.41	
695.781	0.98	
696.186	0.15	
696.591	0.57	
696.996	0.011	
697.401	0.193	
697.806	0.269	
698.211	0.127	
698.616	0.740	
699.021	1.270	
699.426	1.356	
699.831	1.168	
700.236	0.654	
700.641	0.20	
701.046	0.34	
701.451	0.19	
701.856	0.33	
702.261	0.57	
702.666	0.33	
703.071	0.27	
703.476	0.27	
703.881	0.51	
704.286	0.39	
704.691	0.09	
705.096	0.06	
705.501	0.13	
705.906	0.25	
706.311	0.13	
706.716	0.01	

\\documentacion\TRABAJOS\ANAC\036_BELATE_ALMONDOZ\vigentes\02_Estudio_de_Alternativas\Planos\05_DEFINICION_ALTERNATIVAS\TBA_05_01_03_LONGITUDINAL_ALTI.dwg_10/02/2015 11:44:01_javier_11

EJE 3 CALZADA DERECHA EN ALTERNATIVAS 1 Y 2. TRAMO INICIAL



PLANO DE COMPARACION		696	0+800										1+000										1+200										14400																																																																																																																																																																																																																																																																																																																																																																																																																																																																																																																																																																																																																																																		
P.K.																																																																																																																																																																																																																																																																																																																																																																																																																																																																																																																																																																																																																																																																																			
COTAS ROJAS																																																																																																																																																																																																																																																																																																																																																																																																																																																																																																																																																																																																																																																																																			
COTA RASANTE	COTA TERRENO	703.694	703.688	703.690	703.692	703.694	703.696	703.698	703.700	703.702	703.704	703.706	703.708	703.710	703.712	703.714	703.716	703.718	703.720	703.722	703.724	703.726	703.728	703.730	703.732	703.734	703.736	703.738	703.740	703.742	703.744	703.746	703.748	703.750	703.752	703.754	703.756	703.758	703.760	703.762	703.764	703.766	703.768	703.770	703.772	703.774	703.776	703.778	703.780	703.782	703.784	703.786	703.788	703.790	703.792	703.794	703.796	703.798	703.800	703.802	703.804	703.806	703.808	703.810	703.812	703.814	703.816	703.818	703.820	703.822	703.824	703.826	703.828	703.830	703.832	703.834	703.836	703.838	703.840	703.842	703.844	703.846	703.848	703.850	703.852	703.854	703.856	703.858	703.860	703.862	703.864	703.866	703.868	703.870	703.872	703.874	703.876	703.878	703.880	703.882	703.884	703.886	703.888	703.890	703.892	703.894	703.896	703.898	703.900	703.902	703.904	703.906	703.908	703.910	703.912	703.914	703.916	703.918	703.920	703.922	703.924	703.926	703.928	703.930	703.932	703.934	703.936	703.938	703.940	703.942	703.944	703.946	703.948	703.950	703.952	703.954	703.956	703.958	703.960	703.962	703.964	703.966	703.968	703.970	703.972	703.974	703.976	703.978	703.980	703.982	703.984	703.986	703.988	703.990	703.992	703.994	703.996	703.998	704.000	704.002	704.004	704.006	704.008	704.010	704.012	704.014	704.016	704.018	704.020	704.022	704.024	704.026	704.028	704.030	704.032	704.034	704.036	704.038	704.040	704.042	704.044	704.046	704.048	704.050	704.052	704.054	704.056	704.058	704.060	704.062	704.064	704.066	704.068	704.070	704.072	704.074	704.076	704.078	704.080	704.082	704.084	704.086	704.088	704.090	704.092	704.094	704.096	704.098	704.100	704.102	704.104	704.106	704.108	704.110	704.112	704.114	704.116	704.118	704.120	704.122	704.124	704.126	704.128	704.130	704.132	704.134	704.136	704.138	704.140	704.142	704.144	704.146	704.148	704.150	704.152	704.154	704.156	704.158	704.160	704.162	704.164	704.166	704.168	704.170	704.172	704.174	704.176	704.178	704.180	704.182	704.184	704.186	704.188	704.190	704.192	704.194	704.196	704.198	704.200	704.202	704.204	704.206	704.208	704.210	704.212	704.214	704.216	704.218	704.220	704.222	704.224	704.226	704.228	704.230	704.232	704.234	704.236	704.238	704.240	704.242	704.244	704.246	704.248	704.250	704.252	704.254	704.256	704.258	704.260	704.262	704.264	704.266	704.268	704.270	704.272	704.274	704.276	704.278	704.280	704.282	704.284	704.286	704.288	704.290	704.292	704.294	704.296	704.298	704.300	704.302	704.304	704.306	704.308	704.310	704.312	704.314	704.316	704.318	704.320	704.322	704.324	704.326	704.328	704.330	704.332	704.334	704.336	704.338	704.340	704.342	704.344	704.346	704.348	704.350	704.352	704.354	704.356	704.358	704.360	704.362	704.364	704.366	704.368	704.370	704.372	704.374	704.376	704.378	704.380	704.382	704.384	704.386	704.388	704.390	704.392	704.394	704.396	704.398	704.400	704.402	704.404	704.406	704.408	704.410	704.412	704.414	704.416	704.418	704.420	704.422	704.424	704.426	704.428	704.430	704.432	704.434	704.436	704.438	704.440	704.442	704.444	704.446	704.448	704.450	704.452	704.454	704.456	704.458	704.460	704.462	704.464	704.466	704.468	704.470	704.472	704.474	704.476	704.478	704.480	704.482	704.484	704.486	704.488	704.490	704.492	704.494	704.496	704.498	704.500	704.502	704.504	704.506	704.508	704.510	704.512	704.514	704.516	704.518	704.520	704.522	704.524	704.526	704.528	704.530	704.532	704.534	704.536	704.538	704.540	704.542	704.544	704.546	704.548	704.550	704.552	704.554	704.556	704.558	704.560	704.562	704.564	704.566	704.568	704.570	704.572	704.574	704.576	704.578	704.580	704.582	704.584	704.586	704.588	704.590	704.592	704.594	704.596	704.598	704.600	704.602	704.604	704.606	704.608	704.610	704.612	704.614	704.616	704.618	704.620	704.622	704.624	704.626	704.628	704.630	704.632	704.634	704.636	704.638	704.640	704.642	704.644	704.646	704.648	704.650	704.652	704.654	704.656	704.658	704.660	704.662	704.664	704.666	704.668	704.670	704.672	704.674	704.676	704.678	704.680	704.682	704.684	704.686	704.688	704.690	704.692	704.694	704.696	704.698	704.700	704.702	704.704	704.706	704.708	704.710	704.712	704.714	704.716	704.718	704.720	704.722	704.724	704.726	704.728	704.730	704.732	704.734	704.736	704.738	704.740	704.742	704.744	704.746	704.748	704.750	704.752	704.754	704.756	704.758	704.760	704.762	704.764	704.766	704.768	704.770	704.772	704.774	704.776	704.778	704.780	704.782	704.784	704.786	704.788	704.790	704.792	704.794	704.796	704.798	704.800	704.802	704.804	704.806	704.808	704.810	704.812	704.814	704.816	704.818	704.820	704.822	704.824	704.826	704.828	704.830	704.832	704.834	704.836	704.838	704.840	704.842	704.844	704.846	704.848	704.850	704.852	704.854	704.856	704.858	704.860	704.862	704.864	704.866	704.868	704.870	704.872	704.874	704.876	704.878	704.880	704.882	704.884	704.886	704.888	704.890	704.892	704.894	704.896	704.898	704.900	704.902	704.904	704.906	704.908	704.910	704.912	704.914	704.916	704.918	704.920	704.922	704.924	704.926	704.928	704.930	704.932	704.934	704.936	704.938	704.940	704.942	704.944	704.946	704.948	704.950	704.952	704.954	704.956	704.958	704.960	704.962	704.964	704.966	704.968	704.970	704.972	704.974	704.976	704.978	704.980	704.982	704.984	704.986	704.988	704.990	704.992	704.994	704.996	704.998	705.000



\\documentacion\TRABAJOS\ANAC\036_BELATE_ALMANDOZ\vigentes\02_Estudio_de_Alternativas\Planos\05_DEFINICION_ALTERNATIVAS\TBA_05_01_03_LONGITUDINAL_ALTI.dwg_10/02/2015 11:44:06_javier_1:1

EJE 4 CALZADA DERECHA EN ALTERNATIVAS 1 Y 2. TRAMO FINAL

TÚNEL EXISTENTE DE ALMANDOZ
L=1220m. (BASE)
L=1192 (CLAVE)



PLANO DE COMPARACION		472
P.K.		0+000
COTAS ROJAS		
COTA RASANTE	COTA TERRENO	
501.452	13.359	514.81
501.247	0.663	501.91
501.042	0.05	501.00
500.837	0.097	500.03
500.632	0.018	500.05
500.427	0.00	500.43
500.222	0.015	500.24
500.016	0.063	500.08
499.811	0.049	499.85
499.604	0.01	499.60
499.397	0.04	499.35
499.191	0.06	499.11
488.985	0.06	488.97
488.778	0.04	488.64
488.572	0.04	488.429
488.365	0.07	488.167
488.158	0.02	487.908
487.951	0.011	487.648
487.744	0.002	487.388
487.537	0.10	487.128
487.330	0.15	486.868
487.123	0.17	486.608
486.916	0.18	486.348
486.709	0.21	486.088
486.502	0.29	485.828
486.295	0.25	485.568
486.088	0.27	485.308
485.881	0.35	485.048
485.674	0.34	484.788
485.467	0.35	484.528
485.260	0.36	484.268
485.053	0.36	484.008
484.846	0.22	483.748
484.639	0.42	483.488
484.432	0.41	483.228
484.225	0.43	482.968
484.018	0.37	482.708
483.811	0.30	482.448
483.604	0.28	482.188
483.397	0.34	481.928
483.190	0.18	481.668
482.983	0.29	481.408
482.776	0.18	481.148
482.569	0.25	480.888
482.362	0.12	480.628
482.155	0.14	480.368
481.948	0.13	480.108
481.741	0.13	479.848
481.534	0.15	479.588
481.327	0.26	479.328
481.120	0.20	479.068
480.913	0.08	478.808
480.706	0.07	478.548
480.499	0.07	478.288
480.292	0.06	478.028
480.085	0.05	477.768
479.878	0.07	477.508
479.671	0.091	477.248
479.464	0.027	476.988
479.257	0.06	476.728
479.050	0.06	476.468
478.843	0.078	476.208
478.636	0.044	475.948
478.429	0.026	475.688
478.222	0.035	475.428

\\documentacion\TRABAJOS\ANAC\036_BELATE_ALMANDOZ\vigentes\02_Estudio_de_Alternativas\Planos\05_DEFINICION_ALTERNATIVAS\TABLA_05_01_03_LONGITUDINAL_ALTI.dwg_10/02/2015 11:44:11, javier, 1:1