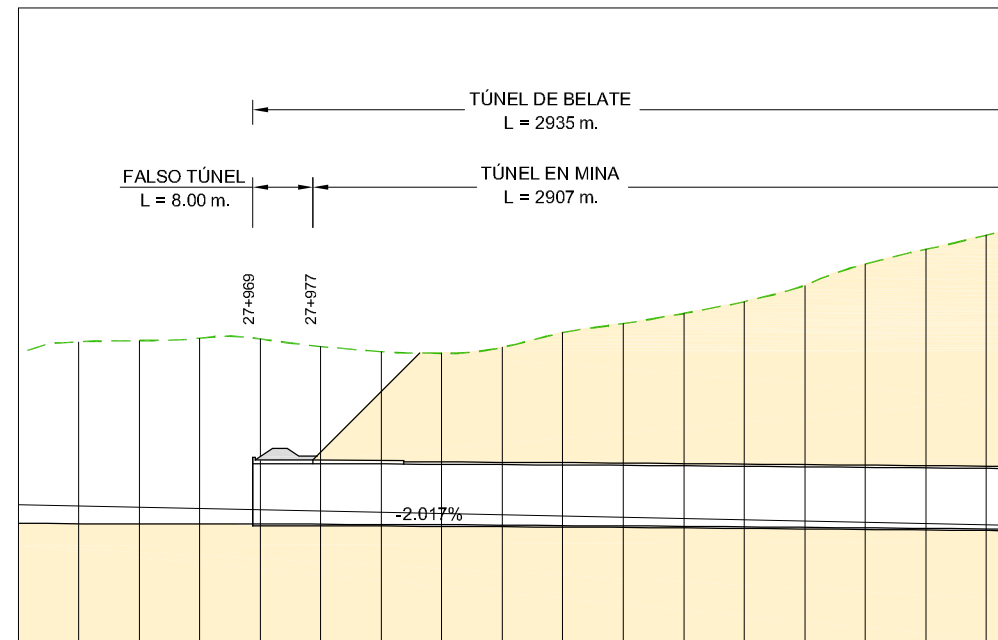
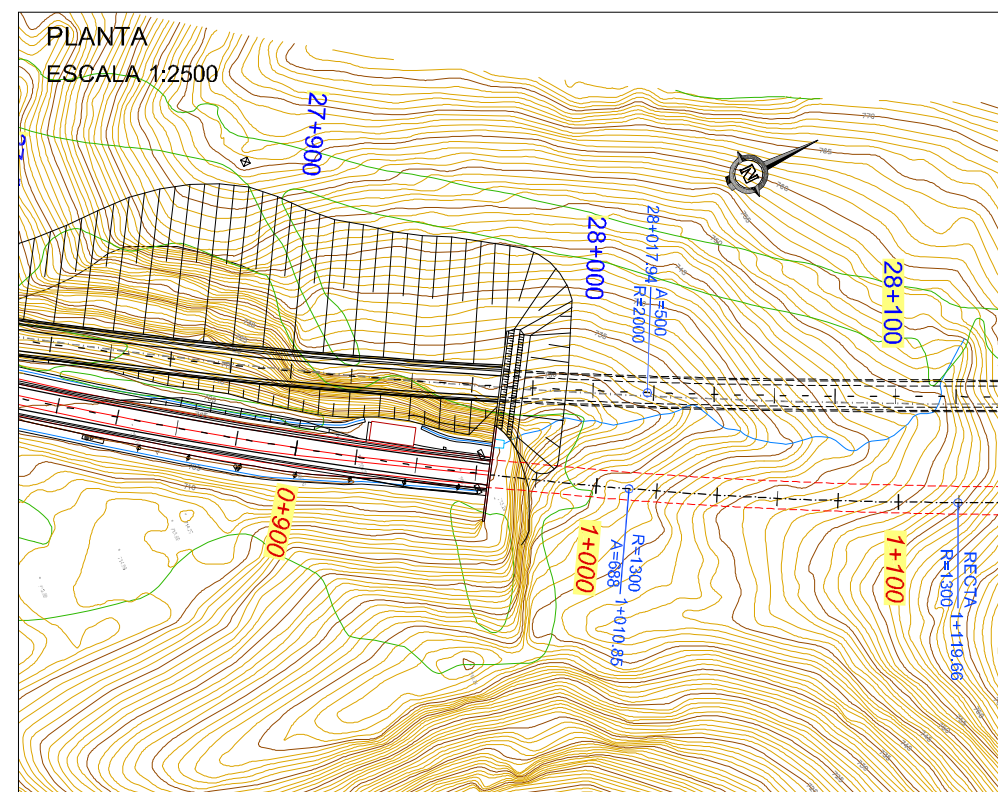


**BOQUILLA DE ENTRADA**  
**PERFIL LONGITUDINAL**  
 ESCALA 1:1000

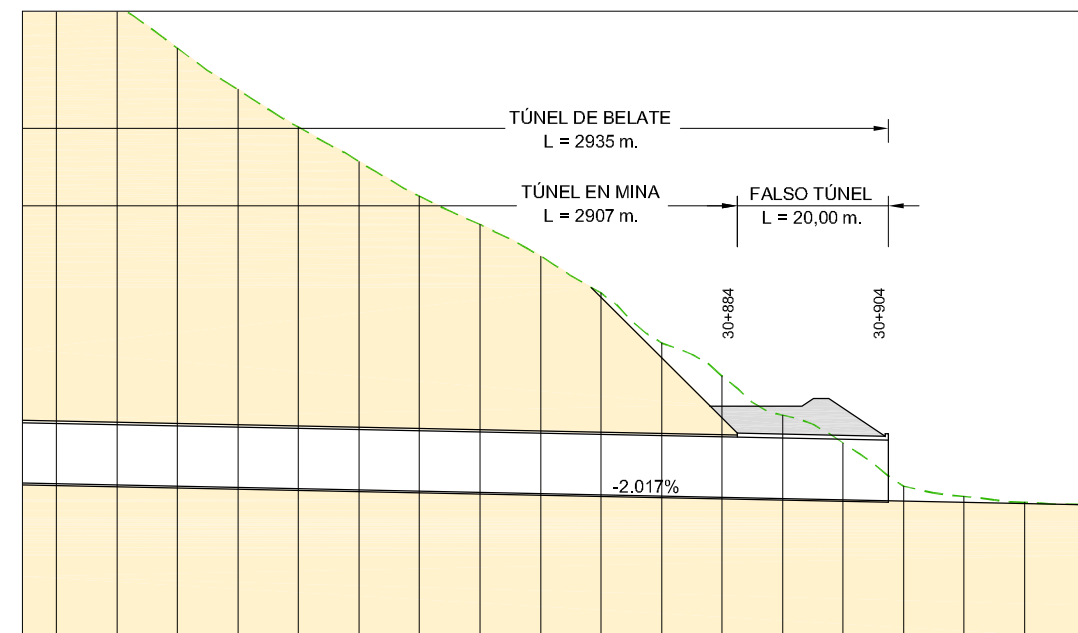


PLANO DE COMPARACIÓN		690																																
P.K.		28+000																																
COTAS ROJAS		24.032	24.201	24.548	24.483	23.500	22.842	22.670	23.480	25.490	26.725	28.123	29.765	31.947	34.841	36.886	38.858																	
COTA RASANTE	COTA TERRENO	727.99	705.529	729.56	705.516	729.72	705.498	730.05	705.475	729.96	705.447	728.95	705.414	728.26	705.376	728.05	705.333	728.81	705.286	730.78	705.233	731.96	705.175	733.30	705.113	734.88	705.046	736.99	704.973	739.81	704.896	741.78	704.814	743.67

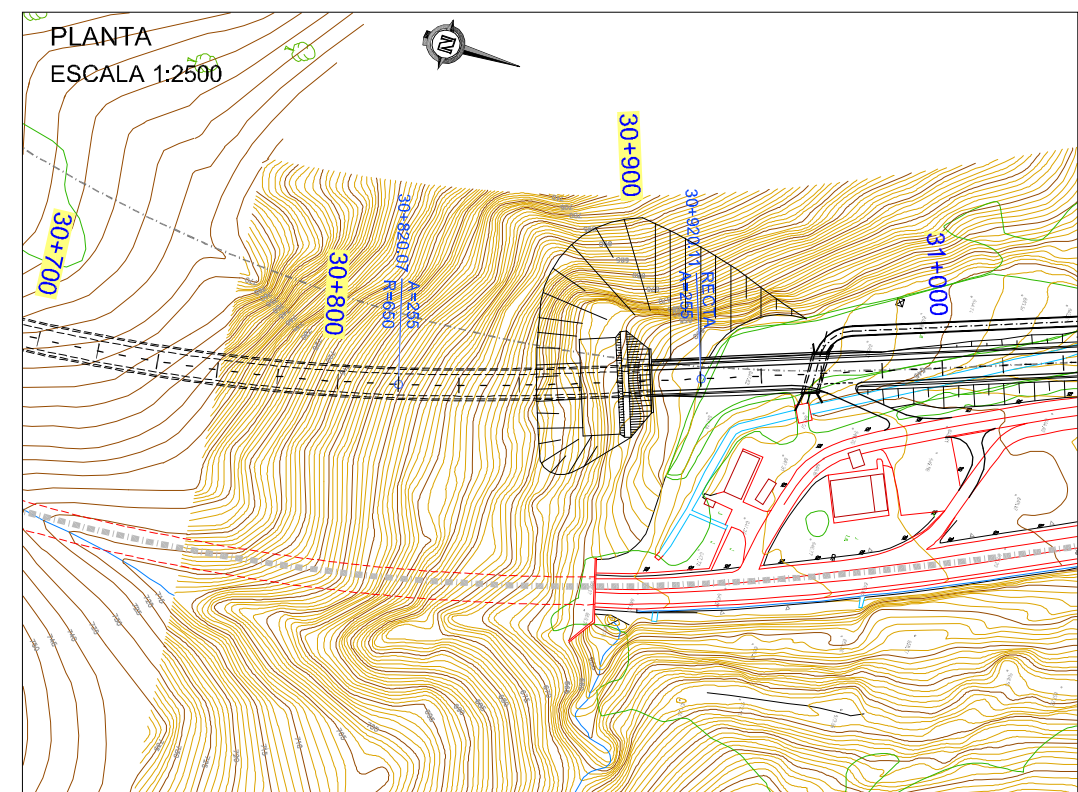


**NUEVO TÚNEL DE BELATE. CALZADA IZQUIERDA**

**BOQUILLA DE SALIDA**  
**PERFIL LONGITUDINAL**  
 ESCALA 1:1000



PLANO DE COMPARACIÓN		630																																		
P.K.		30+800																																		
COTAS ROJAS		69.635	63.431	57.876	52.613	47.778	43.389	38.973	35.420	31.376	26.675	20.214	16.042	10.999	7.494	1.958	0.737	0.120	0.019																	
COTA RASANTE	COTA TERRENO	650.381	720.02	650.220	713.65	650.058	707.93	649.897	702.51	649.735	697.51	649.574	692.96	649.413	688.39	649.251	684.67	649.090	680.47	648.928	675.60	648.767	668.98	648.606	664.65	648.444	659.44	648.283	655.78	648.122	650.08	647.960	648.70	647.799	647.92	647.637



\\documentacion\trabajos\AMAC\036\_BELATE\_ALMANDOZ\vigentes\02\_Estudio\_de\_Alternativas\Planos\05\_DEFINICION\_ALTERNATIVAS\TBA\_05\_01\_08\_01\_TUNEL\_BELATE\_h01\_Boquillas.dwg, 09/02/2015 8:54:34, Yolandia, 1:1